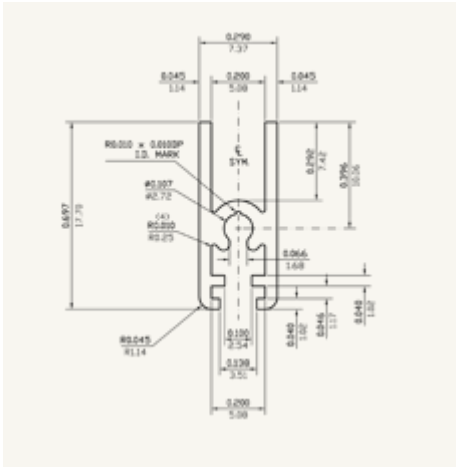


DRAWING	DESCRIPTION	DIE NUMBER	LBS/FT	KG/M
	<p>0.862 x 0.425 BACK-UP ANGLE WALL = 0.050 (1.27)</p>	<p>ES05027</p>	<p>0.071</p>	<p>0.105</p>
	<p>0.506 x 0.542 CHANNEL WALL = 0.045 (1.14)</p>	<p>ES05028</p>	<p>0.082</p>	<p>0.122</p>
	<p>1.395 x 0.625 HINGE WALL = 0.085 (2.16)</p>	<p>ES05948</p>	<p>0.198</p>	<p>0.295</p>

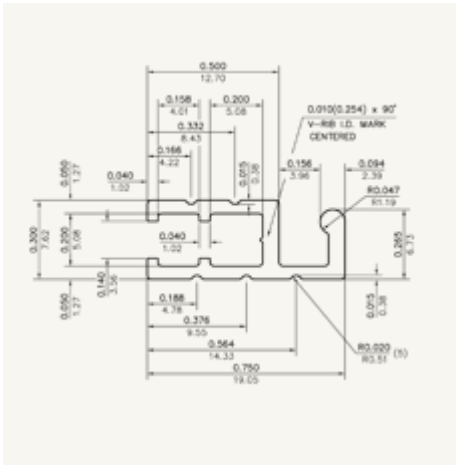


0.697 x 0.290
SASH RAIL
WALL = 0.045 (1.14)

ES06486

0.106

0.157

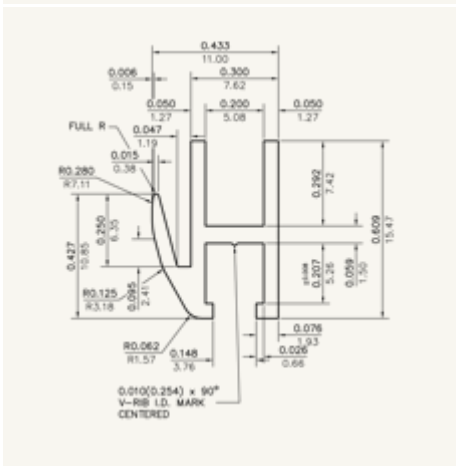


0.750 x 0.300
SCREEN RAIL
WALL = 0.062 (1.57)

ES07624

0.109

0.163

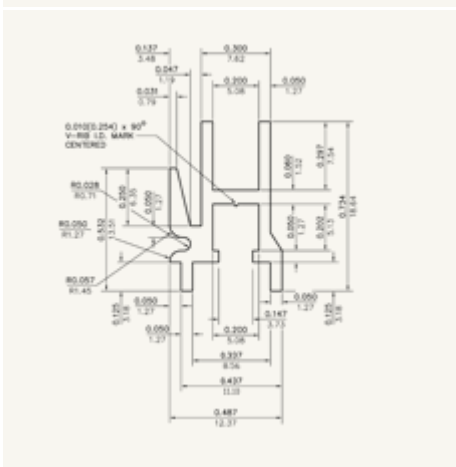


0.433 x 0.609
INTERLOCK
WALL = 0.050 (1.27)

ES07625

0.112

0.167

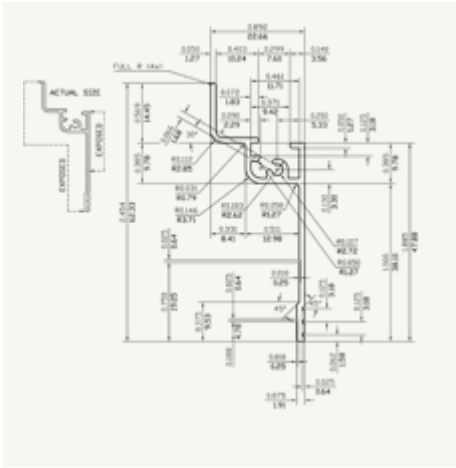


0.487 x 0.734
GLASS MEETING RAIL
WALL = 0.050 (1.27)

ES07627

0.145

0.216

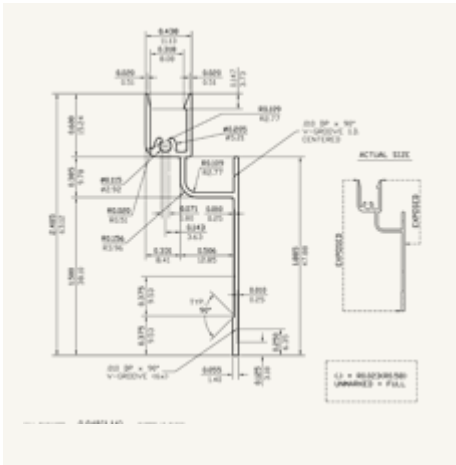


2.454 x 0.892
 STORM WINDOW FRAME
 WALL = 0.050 (1.27)

ES09705

0.255

0.379

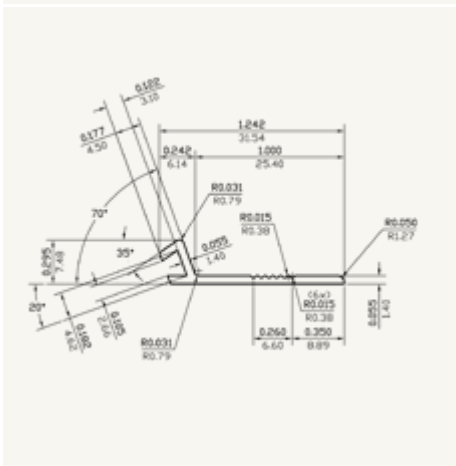


2.485 x 0.882
 BOTTOM FRAME
 WALL = 0.045 (1.14)

ES09808

0.241

0.358


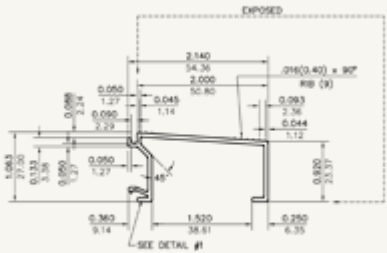
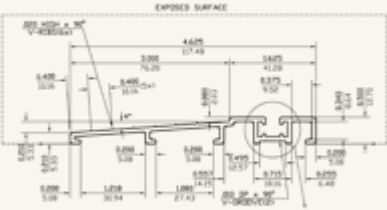


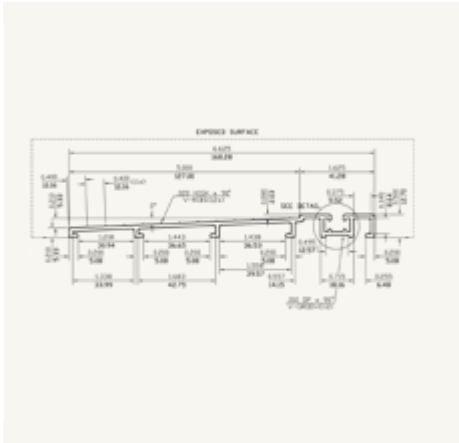
1.242 x 0.295
 SWEEP
 WALL = 0.055 (1.40)

ES09991

0.097

0.145

DRAWING	DESCRIPTION	DIE NUMBER	LBS/FT	KG/M
	<p>4.726 x 1.650 6" PATIO SILL WALL = 0.065 (1.65)</p>	<p>ES06527</p>	<p>0.553</p>	<p>0.822</p>
	<p>2.140 x 1.063 2" SILL EXTENSION WALL = 0.062 (1.57)</p>	<p>ES07539</p>	<p>0.345</p>	<p>0.513</p>
	<p>4.625 x 0.500 THERMALLY BROKEN SILL WALL = 0.080 (2.03)</p>	<p>ES08737</p>	<p>0.719</p>	<p>1.071</p>

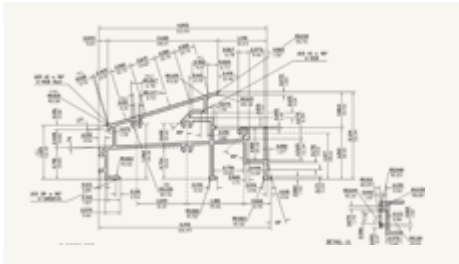


6.625 x 0.500
 THERMALLY BROKEN SILL
 WALL = 0.080 (2.03)

ES08738

0.943

1.404

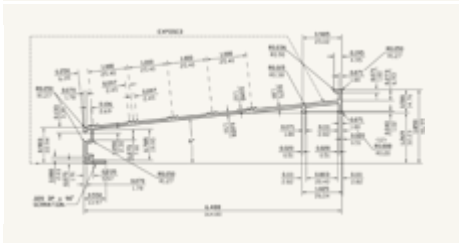


4.093 x 2.124
 SILL
 WALL = 0.060 (1.52)

EH15744

1.133

1.686



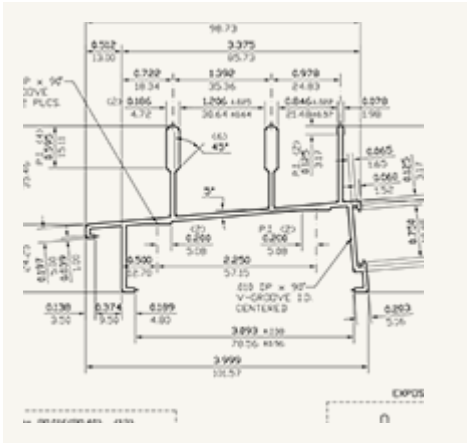
6.488 x 1.850
 7-1/4" SILL
 WALL = 0.059 (1.50)

ES16369

0.719

1.070

DRAWING	DESCRIPTION	DIE NUMBER	LBS/FT	KG/M
	<p>1.420 x 1.420 STILE REINFORCEMENT WALL = 0.050 (1.27)</p>	<p>EH09440</p>	<p>0.323</p>	<p>0.481</p>
	<p>1.431 x 1.431 STILE REINFORCEMENT WALL = 0.050 (1.27)</p>	<p>EH15898</p>	<p>0.321</p>	<p>0.478</p>
	<p>3.375 x 2.147 INTERIOR SILL WALL = 0.062 (1.57)</p>	<p>ES16554</p>	<p>0.816</p>	<p>1.215</p>

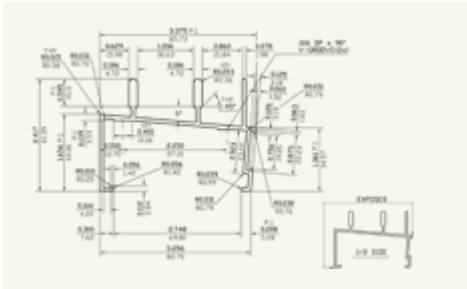


3.999 x 2.351
 EXTERIOR SILL
 WALL = 0.062 (1.57)

ES16555

0.944

1.404

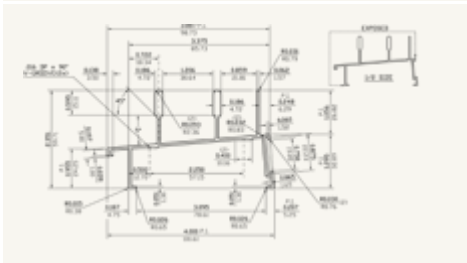


3.375 x 2.417
 INTERIOR SILL
 WALL = 0.078 (1.98)

ES17436

1.043

1.553

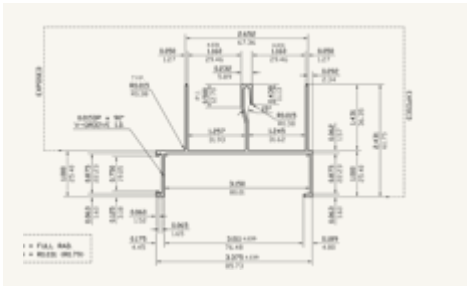


3.887 x 2.351
 EXTERIOR SILL
 WALL = 0.062 (1.57)

ES17437

0.937

1.395

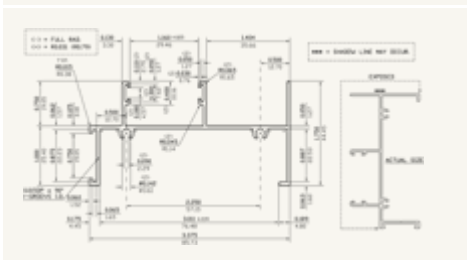


3.375 x 2.431
 INTERIOR HEADER
 WALL = 0.050 (1.27)

ES17439

0.671

0.999

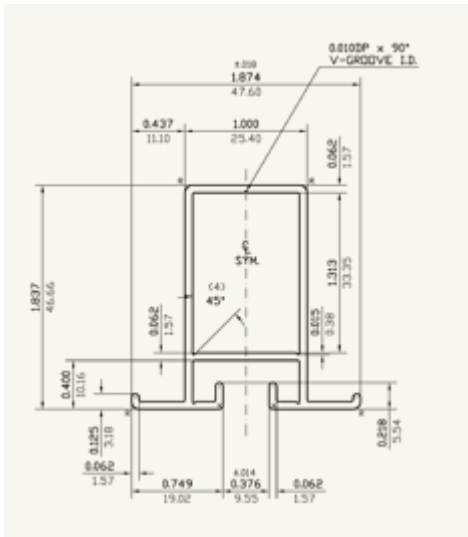


3.375 x 1.750
 JAMB
 WALL = 0.050 (1.27)

ES17440

0.540

0.804

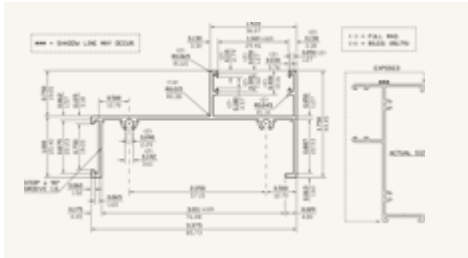


1.874 x 1.837
PULL RAIL
WALL = 0.062 (1.57)

EH17442

0.522

0.777

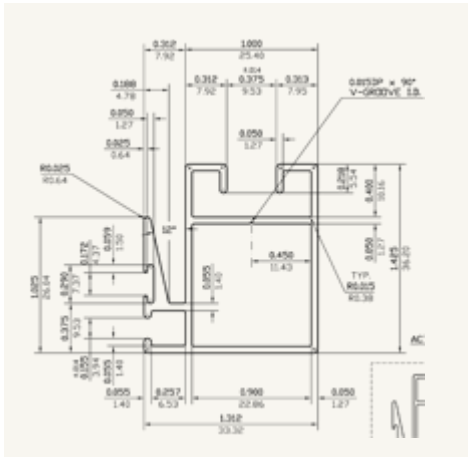


3.375 x 1.750
JAMB
WALL = 0.050 (1.27)

ES17443

0.496

0.738

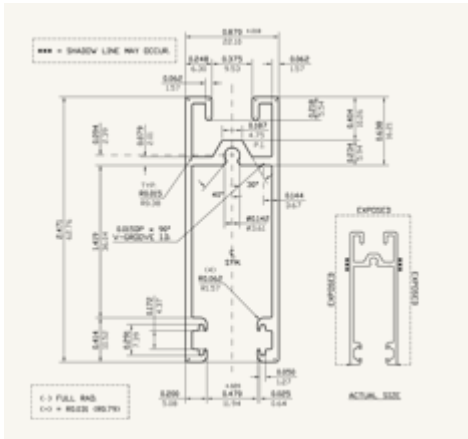


1.425 x 1.312
MEETING RAIL
WALL = 0.050 (1.27)

EH17444

0.438

0.652

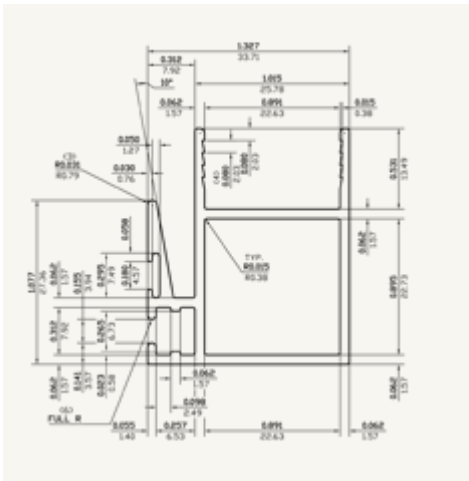


0.870 x 2.471
BOTTOM FRAME
WALL = 0.062 (1.57)

ES17445

0.568

0.845

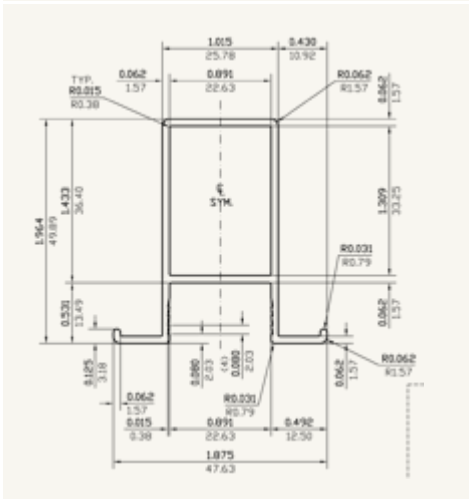


1.550 x 1.327
MEETING RAIL
WALL = 0.062 (1.57)

EH17543

0.472

0.703

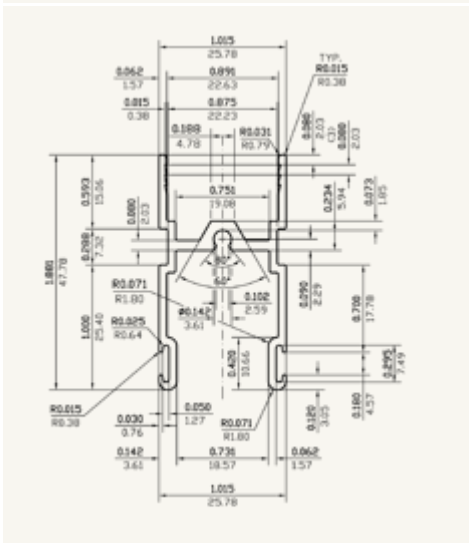


1.964 x 1.875
PULL RAIL
WALL = 0.062 (1.57)

EH17544

0.479

0.713

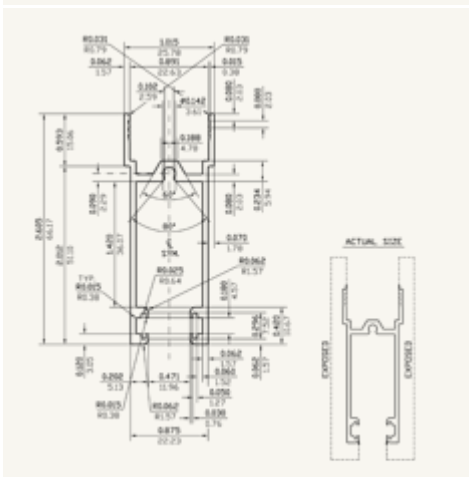


1.015 x 1.881
TOP FRAME
WALL = 0.062 (1.57)

ES17545

0.415

0.617



1.015 x 2.605
BOTTOM FRAME
WALL = 0.062 (1.57)

ES17546

0.548

0.815